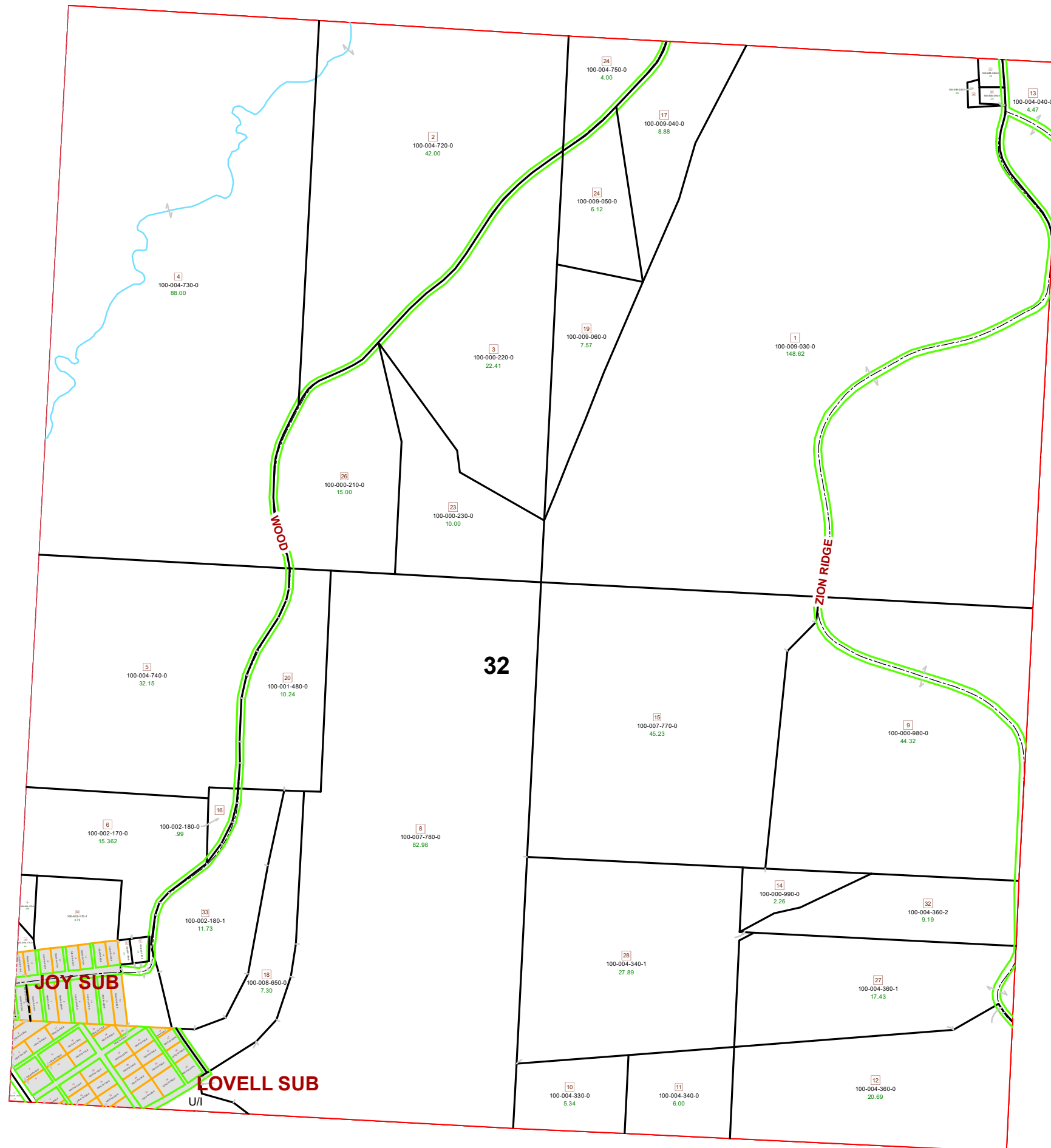
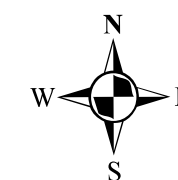


MARION TOWNSHIP SECTION 32 R12 TWP 8 MORGAN COUNTY, OH



PIN	Owner	VOL	PAGE	LegalDescr	Acres
U/I					0
100-008-650-0	BIDDLE JUSTIN A	OR227	2621	R12 T08 S32 SD 18	7.3
100-600-090-0	CHURCH (MT ZION) C/O LARRY WOODYARD	OR45	568	R12 T08 S32 SD 27	0.764
100-002-170-1	DAVIS DAVID G & FRANCES M	OR208	2676	R12 T08 S32 SD 34	3.794
100-004-360-2	FRALEY MICHAEL D	OR101	337	R12 T08 S32 SD 32	9.195
100-004-340-1	FRALEY MICHAEL D	OR202	977	R12 T08 S32 SD 28	27.894
100-004-330-0	JEFFERS' TREE FARM LLC	OR145	430	R12 T08 S32 SD 10	5.34
100-004-340-0	JEFFERS' TREE FARM LLC	OR145	430	R12 T08 S32 SD 11	6.004
100-004-360-0	JEFFERS' TREE FARM LLC	OR145	430	R12 T08 S32 SD 12	20.697
100-000-990-0	JEFFERS' TREE FARM LLC	OR211	3061	R12 T08 S32 SD 14	2.26
100-000-980-0	JEFFERS' TREE FARM LLC	OR211	3061	R12 T08 S32 SD 9 4	44.32
100-007-770-0	JEFFERS' TREE FARM LLC	OR145	430	R12 T08 S32 SD 15	45.234
100-007-780-0	JEFFERS' TREE FARM LLC	OR145	430	R12 T08 S32 SD 8	82.989
100-000-210-0	JEFFERS' TREE FARM LLC	OR145	430	R12 T08 S32 SD 26	15
100-000-230-0	JEFFERS' TREE FARM LLC	OR145	430	R12 T08 S32 SD 23	10
100-009-060-0	JEFFERS' TREE FARM LLC	OR145	430	R12 T08 S32 SD 19	7.57
100-000-220-0	JEFFERS' TREE FARM LLC	OR145	430	R12 T08 S32 SD 3 F	22.41
100-009-050-0	JEFFERS' TREE FARM LLC	OR145	430	R12 T08 S32 SD 24	6.12
100-004-040-0	JEFFERS' TREE FARM LLC	OR145	430	R12 T08 S32 SD 13	4.47
100-009-030-0	JEFFERS' TREE FARM LLC	OR145	430	R12 T08 S32 SD 1 E	148.616
100-009-040-0	JEFFERS' TREE FARM LLC	OR145	430	R12 T08 S32 SD 17	8.88
100-002-180-1	JORDAN BRIAN & LINDSEY	OR200	488	R12 T08 S32 SD 33	11.733
100-001-480-0	JORDAN BRIAN & LINDSEY	OR200	488	R12 T08 S32 SD 20	10.245
100-004-740-0	LOWE BETTY M	OR222	2062	R12 T08 S32 SD 5	32.15
100-004-750-0	LOWE BETTY M	OR222	2062	R12 T08 S32 SD 24	4
100-004-720-0	LOWE BETTY M	OR222	2062	R12 T08 S32 SD 2	42
100-004-730-0	LOWE BETTY M	OR222	2062	R12 T08 S32 SD 4	88
100-009-030-1	MARION TOWNSHIP TRUSTEES	OR21	326	R12 T08 S32 SD 30	0.234
100-600-090-1	MARION TWP TRUSTEES C/O JANICE WOGAN	OR45	571	R12 T08 S32 SD 31	0.287
100-004-360-1	PAXSON DAVID M & LISA M	OR202	982	R12 T08 S32 SD 27	17.432
100-002-160-0	SWARO DAVID & STEPHANIE	OR233	4934	R12 T08 S32 SD 22	0.2
100-002-150-0	SWARO DAVID & STEPHANIE	OR233	4934	R12 T08 S32 SD 21	0.26
100-002-180-0	SWARO DAVID & STEPHANIE	OR233	4934	R12 T08 S32 SD 16	0.993
100-002-170-0	SWARO DAVID & STEPHANIE	OR233	4934	R12 T08 S32 SD 6	15.362
100-009-170-0	WELLS WALTER E	OR130	292	R12 T08 S32 SD 25	0.4
100-002-170-2	WELLS WALTER E	OR210	2087	R12 T08 S32 SD 35	0.598



Boundaries	
----- Hidden	--- ROW
----- Hydro	--- Section
----- Roads	--- Township
----- County	--- Parcels
----- Lot	
----- Parcel	



Disclaimer: The information that these maps contains is for reference purposes only. Please bring any errors to the attention of the Engineer's Office staff.

Thank you

